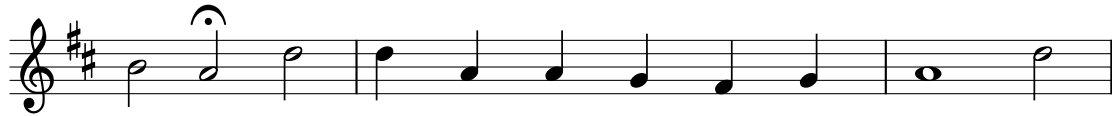




Introit. The kind - ly Spi - rit of the Lord, has
1. Cre - a - tor Spir - it, by whose aid, The
2. O Source of un - cre - a - ted light, The
3. All ad - o - ra - tion ev - er be, E -



filled the world, wis - dom out - poured, Al - le - lu - ia, Al - le -
world's foun - da - tions first were laid! Al - le - lu - ia, Al - le -
Fa - ther's prom - ised Par - a - clete; Al - le - lu - ia, Al - le -
ter - nal Par - a - clete to thee. Al - le - lu - ia, Al - le -



lu - ia! And that which holds and binds all things, knows
lu - ia! Give us thy - self that we may see The
lu - ia! Thrice ho - ly Font, thrice ho - ly Fire, Our
lu - ia! From sin and sor - row set us free That



ev - 'ry mor - tals ut - ter - ings. Al - le - lu - ia, Al - le -
Fa - ther and the Son by thee. Al - le - lu - ia, Al - le -
hearts with heav'n - ly love in - spire. Al - le - lu - ia, Al - le -
we may live e - ter - nal - ly. Al - le - lu - ia, Al - le -



lu - ia, Al - le - lu - ia, Al - le - lu - ia, Al - le - lu - ia!

*Text: Veni, Creator Spiritus, attr. to Rabanus Maurus, 776-856, para. by John Dryden, 1631-1700.
Wisdom 1:7; Psalm 68; Spiritus Domini; Introit, Pentecost Mass of the Day; adapted, Greg Heislman, © 2014.
Tune: LASST UNS ERFREUEN, LM with Alleluias.*